

RCBS®

ROCK CHUCKER SUPREME PRESS



PRODUCT INSTRUCTIONS

SAFETY

Reloading is an enjoyable and rewarding hobby that can be conducted safely. But carelessness or negligence can make reloading hazardous. This product has been designed from the beginning with the user's safety in mind.

When reloading, some safety rules must be followed. By observing these rules, the chance of a hazardous occurrence causing personal injury or property damage is minimized.

GENERAL

- Use all equipment as the manufacturer recommends. Study the instructions carefully and become thoroughly familiar with the operating of the tool. Don't take shortcuts.
- Observe "good housekeeping" in the reloading area. Keep tools and components neat, clean and orderly. Promptly and completely clean up primer and powder spills.
- Reload only when you can give your undivided attention. Do not reload when fatigued or ill. Develop a reloading routine to avoid mistakes. Avoid haste — load at a leisurely pace.
- Always wear adequate eye protection.
- If any unusual resistance is encountered when moving the operating handle, STOP IMMEDIATELY and investigate the cause. To proceed against unusual resistance may damage equipment and/or cause serious personal injury!

LOADING DATA

- Use only laboratory tested reloading data. We highly recommend the use of the SPEER Reloading Manual or RCBS.load reloading software.
- OBSERVE ALL WARNINGS ABOUT THE USE OF MAXIMUM LISTED LOADS.

PRIMERS AND POWDER

- Store primers and powder beyond the reach of children and away from heat, dampness, open flames, and electrical equipment.
- DO NOT use primers of unknown identity.
- Keep primers in original factory container until ready to use. Return unused primers to the same factory packaging for safety and to preserve their identity.
- DO NOT store primers in bulk. The blast of just a few hundred primers is sufficient to cause serious injury to anyone nearby.
- DO NOT force primers. Use care in handling primers.
- DO NOT use any powder unless its identity is positively known. Discard all mixed powders and those of uncertain or unknown identity.
- If you use a powder measure, replace the lids on both the powder hopper and powder can after the powder hopper has been filled.
- Before charging cases, settle the powder in the powder hopper. Load and check the weight of at least ten charges. This will assure you that the correct powder charge is being loaded.
- After a reloading session ends, pour the remaining powder back in its original factory container. This will preserve the identity and shelf life of the powder.
- DO NOT smoke while handling powder or primers.

RECORD KEEPING

- Keep complete record of reloads. Apply a descriptive label to each box showing the date produced, and the primer, powder and bullet used. Labels for this purpose are packed with SPEER bullets.

Since RCBS has no control over the choice of components, the manner in which they are assembled, the use of this press, or the firearms in which the resulting ammunition may be used, no responsibility, either expressed or implied, is assumed for the use of ammunition reloaded with this press.

INTRODUCTION

The Rock Chucker Supreme Press has been designed specifically for heavy-duty reloading, case forming, and bullet swaging. It is engineered to handle the largest and longest magnums down to .17 caliber. The compound leverage system of the Rock Chucker Supreme Press can full-length resize cases with less effort than other presses neck size. Using RCBS Case Forming Dies this press will form .30-06 cases into many other calibers.

By combining the famous RCBS block "O" frame with the compound leverage system, the Rock Chucker Supreme will develop work pressure that would spring other presses out of alignment. To insure alignment under these pressures, the Rock Chucker press frame provides a full four inches of ram-bearing surface to rigidly support the one inch diameter main ram. The compound leverage action is similar to that of a power punch press. As the handle pressure increases, the leverage is compounded, building up a maximum work pressure in the main ram as it travels the full length of the stroke. The toggle block, links and pins are engineered to withstand the punishment of heavy-duty reloading. The handle is made of solid steel and features a comfortable ball-type handle grip. The Rock Chucker Supreme Press has standard 7/8-14 thread for most popular reloading dies and accessories.

ACCESSORIES

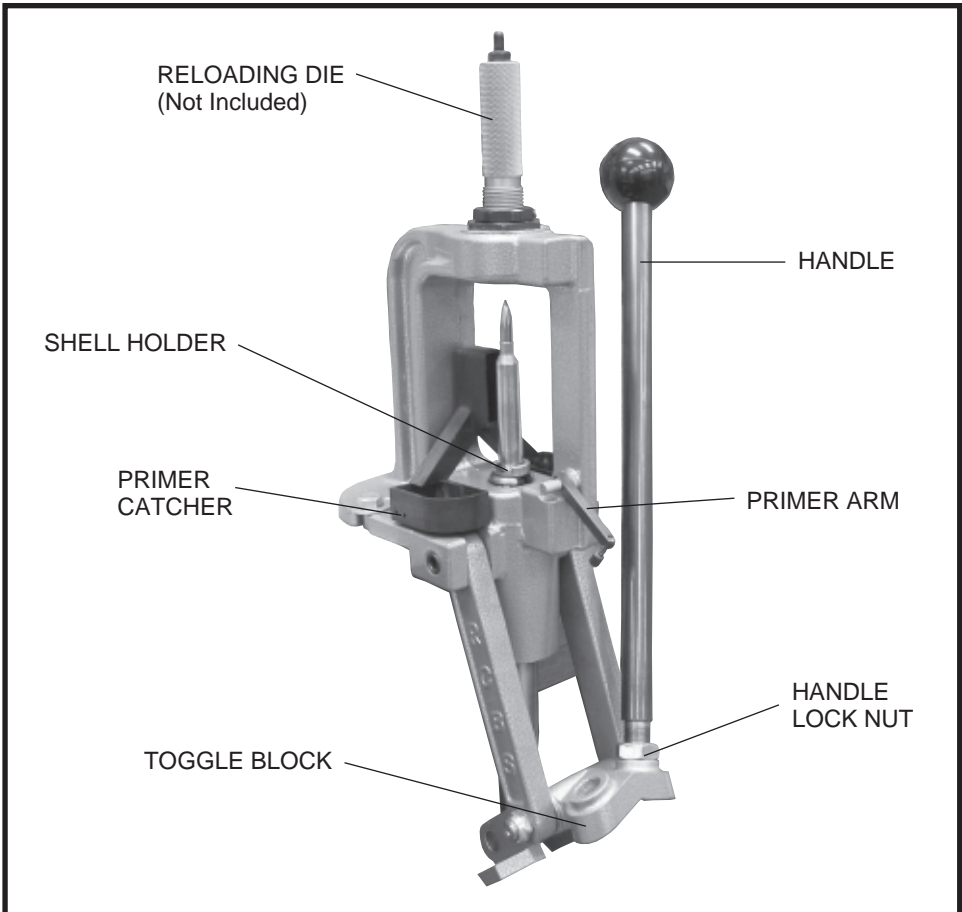
The Rock Chucker Supreme Press is designed to utilize a primer arm. This priming system is equipped with interchangeable primer plugs and sleeves for seating large and small primers.

The Primer Catcher keeps spent primers from dropping to the floor and is easily removed for emptying.

UNPACKING

Unpack the press carefully and look for the items listed below. Refer to the parts list for identification.

- Press
- Handle
- Primer Catcher
- Accessory Pack: Contains handle nut, Primer Arm, large and small primer plugs and sleeves, coil spring



INSTALLATION

Mount the Rock Chucker Supreme Press to a sturdy workbench or table with two 3/8" bolts of sufficient length to penetrate the press base and bench.

Attach the handle nut to handle. Install the threaded portion of the handle to either the right or left side of the toggle block and lock down with the handle nut. See photo #1. The handle nut must remain tight at all times to avoid damage to the handle and toggle.

Install the Primer Arm as show in photo #2.

Slip the primer catcher between the ram and rear portion of the frame. Snap the feet of the primer catcher into slots on the side of the press frame. See photo #3.

The Rock Chucker Supreme press ram accepts removable type shell holders. To install, insert the shell holder into the ram and twist slightly to the left. To remove, twist slightly to the right. See photo #4.

WARNING

TO AVOID INJURY, READ AND FOLLOW THESE SAFE PRIMING PRACTICES.

DO NOT ATTEMPT TO PRIME MILITARY CARTRIDGE CASES WITH CRIMPED PRIMER POCKETS UNTIL THE CRIMP HAS BEEN REMOVED WITH A COUNTER SINK, A SPECIAL REAMER OR BY SWAGING. PRIMERS SEATED INTO CRIMPED POCKETS ARE SUBJECT TO DEFORMATION WHICH CAN CAUSE MISFIRES AND EVEN DETONATION DURING SEATING WHICH CAN CAUSE SERIOUS PERSONAL INJURY.

DO NOT ATTEMPT TO SEAT PRIMERS AGAINST EXCESSIVE RESISTANCE WHICH MIGHT CAUSE DETONATION AND POSSIBLE SERIOUS PERSONAL INJURY. CHECK TO BE CERTAIN THAT THE CASE WAS NOT PREVIOUSLY PRIMED, THAT THE FIRED PRIMER WAS REMOVED, THAT A PORTION OF THE PRIMER CUP WALL MIGHT STILL BE IN THE PRIMER POCKET AND THAT YOU ARE USING THE CORRECT SIZE PRIMER.

DO NOT MODIFY THE PRIMING SYSTEM IN ANY MANNER OR ATTEMPT TO USE SIMILAR PARTS OR PRIMING SYSTEMS FROM OTHER MANUFACTURER'S. TO DO SO COULD RESULT IN PRIMER DETONATIONS RESULTING IN SERIOUS PERSONAL INJURY.

NEVER SEAT A PRIMER INTO A POWDER CHARGED CASE.

DECAPPING LIVE PRIMERS IS EXTREMELY DANGEROUS AND IS NOT RECOMMENDED.

PRIMING

To use the primer arm, first make sure the correct size primer plug and sleeve are in position. To install the primer plug and sleeve, drop the primer plug through the sleeve. Place the spring on the primer arm body. Thread the plug and sleeve into the primer arm body and tighten the assembly with a small nail or paper clip through the cross hole in the primer plug. Do not over tighten. Check from time to time to be sure the primer plug remains tight.

Insert lubed case into shell holder, lower the press handle to size the case and remove the spent primer. To prime, simply place the correct size primer, anvil side up, into the primer sleeve. See photo #5. Then, gently and slowly raise the press handle. As the case is drawn out of the die, the primer arm will guide into the slot in the ram, the case will be lowered onto the live primer, seating it to the bottom of the primer pocket. See photo #6.

After the primer is seated, lower the press handle enough to allow removal of the case from the shell holder. Be sure not to lower the handle too far or the decapping pin in the die will push the live primer back out. Always inspect the primed case to make certain the primer is properly seated.

The Rock Chucker Supreme does not accept the Auto Primer Feed accessory (9550, 9580).

MAINTENANCE

This press was lubricated at the factory. However, it is necessary to lubricate all moving parts from time to time with gun oil. If rust spots appear, swab lightly with gun oil and wipe dry. Care should be taken not to apply oil where it could come in contact with primer pockets or primers. Oil will deactivate primers. It is a good practice to clean the press prior to lubrication to remove grit and other residue. You will note ease at which the epoxy enamel paint wipes clean. This finish is impervious to oil and is extremely chip and fade resistant.

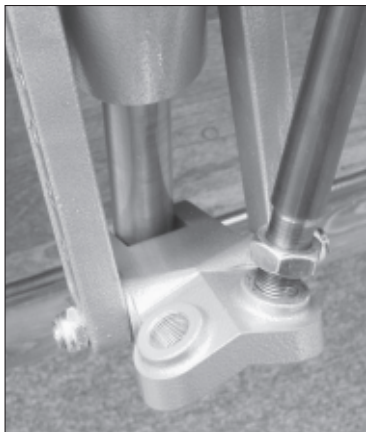


Photo 1



Photo 2



Photo 3

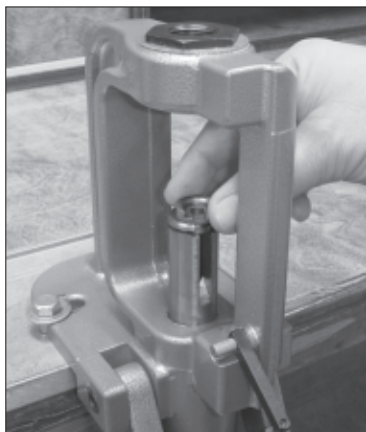


Photo 4



Photo 5

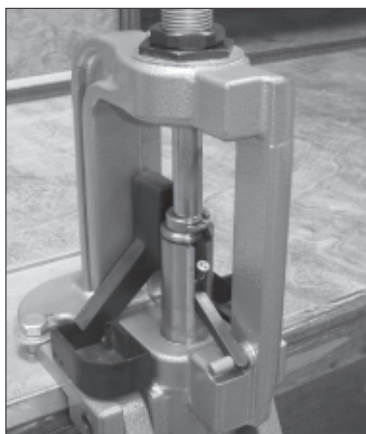
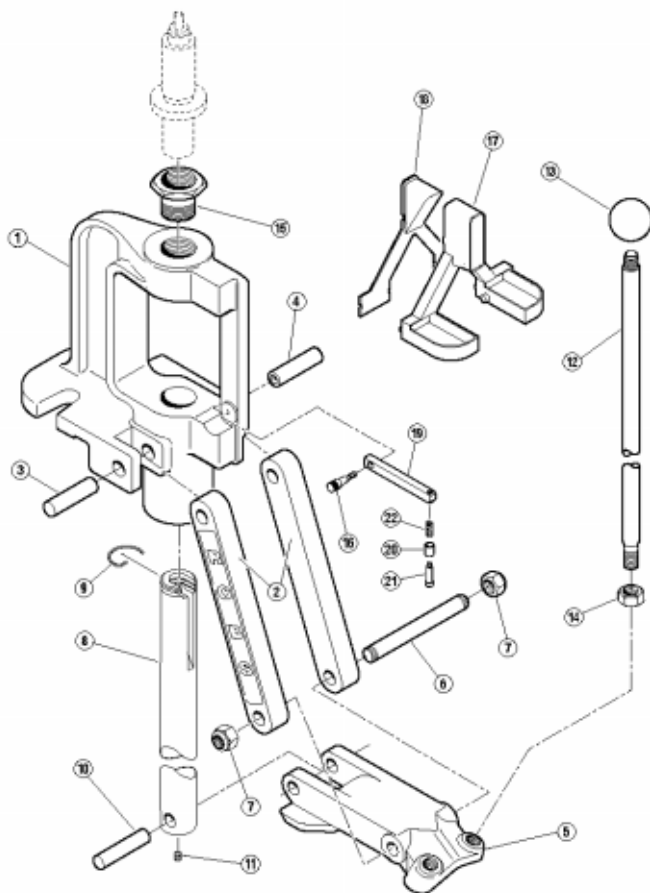


Photo 6

ROCK CHUCKER SUPREME PRESS PARTS LIST



| Key | Part# | Description |
|-----|--------|------------------------|
| 1 | 709193 | Frame |
| 2 | 788902 | Linkage Arm (2) |
| 3 | 709127 | Link Pin, Left |
| 4 | 709128 | Link Pin, Right |
| 5 | 709196 | Toggle Block |
| 6 | 709197 | Toggle Block Pin |
| 7 | 187212 | 7/16-20 Nyloc Nut (2) |
| 8 | 709194 | Ram |
| 9 | 109112 | Ram Clip Spring |
| 10 | 788255 | Ram Pin |
| 11 | 187219 | 1/4-28 x 3/8" Setscrew |
| 12 | 709198 | Handle |

| Key | Part# | Description |
|-----|--------|----------------------|
| 13 | 109121 | Handle Ball |
| 14 | 109136 | 5/8-18 Hex Jam Nut |
| 15 | 709138 | Press Bushing |
| 16 | 709195 | RC IV Primer Arm Pin |
| 17 | 109145 | Primer Catcher Front |
| 18 | 109146 | Primer Catcher Back |
| 19 | 788212 | Primer Arm |
| 20 | 709506 | Primer Sleeve, LG |
| 20 | 709507 | Primer Sleeve, SM |
| 21 | 709554 | Primer Plug, LG |
| 21 | 709555 | Primer Plug, SM |
| 22 | 109508 | Primer Plug Spring |

REFERENCE TABLE

| Caliber | Primer | | Caliber | Primer | |
|---|---------------------|--------------------|--------------------------------|---------------------|--------------------|
| | Shell Holder Number | Plug & Sleeve Size | | Shell Holder Number | Plug & Sleeve Size |
| 17 Remington | 10 | Small | 7.5mm xx 54 French MAS | 2 | Large |
| 218 Bee | 1 | Small | 7.5mm Schmidt-Rubin | 2 | Large |
| 22 Hornet | 12 | Small | 7.62 x 39mm .308/.311 | 32 | Large |
| 22 K-Hornet | 12 | Small | 7.62 x 54Rmm Russian .308/.311 | 13 (5) | Large |
| 22 Remington Jet | 6 | Small | 7.65 x 53mm Belgian Mauser | 3 | Large |
| 22 Savage High-Power | 2 | Large | 7.7 x 58mm Japanese Arisaka | 3/2 | Large |
| 22-250 (22 Varminter) | 3 | Large | 32 Automatic (7.65mm Auto) | 17 | Small |
| 220 Swift | 11 | Large | 32 H&R Magnum | 23 | Small |
| 221 Remington Fireball | 10 | Small | 32 Smith & Wesson Long | 23 | Small |
| 222 Remington | 10 | Small | 32 Winchester Special | 2 | Large |
| 222 Remington Magnum | 10 | Small | 32-20 Winchester | 1 | Small |
| 223 Remington (5.56mm) | 10 | Small | 32-40 Winchester | 2 | Large |
| 5.6mm x 50 Rimmed | 6 | Small | 8mm Remington Magnum | 4 | Large |
| 240 Weatherby Magnum | 3 | Large | 8mm-06 | 3 | Large |
| 243 Winchester | 3 | Large | 8 x 57mm Mauser (8mm Mauser) | 3 | Large |
| 6mm PPC | 32 | Small | 8 x 68Smm Magnum | 34 (5) | Large (2) |
| 6mm Remington (244 Remington) | 3 | Large | 338 Lapua | 14/37 (7) | Large |
| 25 Auto (25 ACP) | 29 (6) | Small | 338 Remington Ultra Magnum | 38/4 | Large |
| 25-06 | 3 | Large | 338 Winchester Magnum | 4 | Large |
| 25-20 Winchester | 1 | Small | 338-06 | 3 | Large |
| 25-35 Winchester | 2 | Large | 338-378 Weatherby Magnum | 14 | Large |
| 250 Savage (250-3000 Savage) | 3 | Large | 340 Weatherby Magnum | 4 | Large |
| 257 Roberts | 3/11 | Large | 348 Winchester | 5 (5) | Large |
| 257 Roberts Improved 40 ⁹ | 3/11 | Large | 35 Remington | 9 | Large |
| 257 Weatherby Magnum | 4 | Large | 35 Whelen | 3 | Large |
| 260 Remington | 3 | Large | 350 Remington Magnum | 4 | Large |
| 264 Winchester Magnum | 4/26 | Large | 356 TSW | 16 | Small |
| 6.5mm-06 | 3 | Large | 356 Winchester | 2 | Large |
| 6.5mm x 54 Mannlicher-Schoenauer | 9 | Large | 357 Magnum | 6 | Small |
| 6.5mm x 55mm Swedish Mauser | 2 | Large | 357 Remington Maximum | 6 | Small |
| 6.5mm x 57mm Mauser | 3 | Large | 357 SIG | 27 | Small |
| 6.5mm x 68Smm | 34 (5) | Large (2) | 358 Winchester | 3 | Large |
| 270 Weatherby Magnum | 4 | Large | 9mm FAR | 16 | Small |
| 270 Winchester | 3 | Large | 9mm Luger | 16 | Small |
| 270 Winchester Short Magnum | 43 | Large | 9mm Makarov | 16 | Small |
| 280 Remington (7mm Exp. Rem.) | 3 | Large | 9 x 21mm | 16 | Small |
| 284 Winchester | 3 | Large | 9.3 x 62mm Mauser | 3 | Large (2) |
| 7mm Bench Rest Remington | 3 | Small | 9.3 x 74Rmm | 4 | Large |
| 7mm Remington Magnum | 4/26 | Large | 375 H&H Magnum | 4 | Large |
| 7mm Remington Short Action Ultra Magnum | 38/4 | Large | 375 Remington Ultra Magnum | 38/4 | Large |
| 7mm Remington Ultra Magnum | 38/4 | Large | 375 Winchester | 2 | Large |
| 7mm Shooting Times Westerner | 4 | Large | 376 Steyr | 42 | Large |
| 7mm Thompson/Center Ugaide | 10 | Small | 378 Weatherby Magnum | 14 (5) | Large |
| 7mm Weatherby Magnum | 4 | Large | 38 Colt Super Auto | 39 | Small |
| 7mm Winchester Short Magnum | 43 | Large | 38 Special | 6 | Small |
| 7mm-08 Remington | 3 | Large | 380 Automatic (ACP) | 10 | Small |
| 7 x 57mm Mauser (7mm Mauser) | 3/11 | Large | 38-40 Winchester | 35 (5) | Large |
| 7 x 64mm Brenneke | 3 | Large | 38-55 Winchester & Ballard | 2 | Large |
| 7 x 65mm Rimmed | 26 | Large | 40 S&W | 27 | Small |
| 7-30 Waters | 2 | Large | 40-65 Shiloh Sharps-408" | 14 (5) | Large |
| 30 M-1 Carbine | 17 | Small | 400 CorBon | 3 | Large |
| 30 Luger (7.65mm Luger) | 16 | Small | 405 Winchester | 24 | Large |
| 30 Mauser (7.63mm Mauser) | 16 | Small | 10mm Auto | 27 | Large |
| 30 Remington | 19 | Large | 41 Magnum | 30 | Large |
| 30-06 Springfield | 3 | Large | 416 Remington Magnum | 4 | Large |
| 30-30 Winchester | 2 | Large | 416 Rigby | 37 (5) | Large |
| 30-338 Winchester Magnum | 4 | Large | 44 Magnum | 18 | Large |
| 30-357 Aet | 6 | Small | 44 Special | 18 | Large |
| 30-378 Weatherby Magnum | 14 (5) | Large | 444 Marlin | 28 | Large |
| 30-40 Krag | 7 | Large | 44-40 Winchester | 35 (5) | Large |
| 300 H&H Magnum | 4 | Large | 45 Automatic (45 ACP) | 3 | Large |
| 300 Remington Short Action Ultra Magnum | 38/4 | Large | 45 Colt | 20 | Large |
| 300 Remington Ultra Magnum | 38/4 | Large | 45-70 U.S. Government | 14 (5) | Large |
| 300 Savage | 3 | Large | 450 Marlin | 4 | Large |
| 300 Weatherby Magnum | 4 | Large | 454 Casull | 20 | Small |
| 300 Winchester Magnum | 4/26 | Large | 458 Winchester Magnum | 4 | Large |
| 300 Winchester Short Magnum | 43 | Large | 460 Weatherby Magnum | 14 (5) | Large |
| 303 British | 7 | Large | 475 Linebaugh 1.400" | 40 (5) | Large |
| 307 Winchester | 2 | Large | 480 Ruger | 40 | Large |
| 308 Norma Magnum | 4 | Large | 50 Action Express | 33 (5) | Large |
| 308 Winchester | 3 | Large | | | |

IMPORTANT: If the caliber of dies you require are not listed, it can be special ordered. RCBS Shell Holder numbers do not correspond to those of other manufacturers. When two Shell Holder numbers are listed, the most popular is shown first. It may be necessary to use the alternate, depending on the manufacturer and/or lot of cases being used. The numbers in () in the table indicates the following: (1) Order Shell Holder by caliber. (2) Cases may be Berdan primed. Depriming and priming must be done by hand. If cases were formed from cases having boxer-type primer, use the appropriate Shell Holder for the caliber. (4) Not available. (5) Auto 4x4 Shell Plate not available. (6) Auto 4x4 and Five-Station Shell Plates not available. (7) Use #14 for Lapua brass, #37 for Norma brass.

SHELL HOLDER CHART

Note: RCBS Shell Holder numbers do not correspond to those of other manufacturers.

| 09201 | Number 1: | 09204 | Number 4: | 09213 | Number 13: | 09228 | Number 28: |
|--|------------------|------------------------------------|-------------------|--------------------------------|-------------------|-----------------------------|-------------------|
| 218 Bee | | 257 Weatherby Magnum | | 7.62mm x 54R Russian | | 444 Marlin | |
| 25-20 Winchester | | 264 Winchester Magnum ³ | | 09214 | Number 14: | 09229 | Number 29: |
| 32-20 Winchester | | 270 Weatherby Magnum | | 30-378 Weatherby Magnum | | 25 Automatic (25 ACP) | |
| 09202 | Number 2: | 7mm Remington Magnum ³ | | 338 Lapua | | 09230 | Number 30: |
| 22 Savage High Power | | 7mm Shooting Times Westerner | | 338-378 Weatherby Magnum | | 41 Magnum | |
| 25-35 Winchester | | 7mm Weatherby Magnum | | 378 Weatherby Magnum | | 09231 | Number 31: |
| 6.5mm x 55 Swedish Mauser | | 30-338 Winchester Magnum | | 40-65 Shiloh-Sharps | | 50-70 U.S. Government | |
| 7-30 Waters | | 300 Holland & Holland Magnum | | 45-70 U.S. Government | | 09232 | Number 32: |
| 30-30 Winchester | | 300 Weatherby Magnum | | 460 Weatherby Magnum | | 6mm PPC | |
| 307 Winchester | | 300 Winchester Magnum ³ | | 09215 | Number 15: | 7.62mm x 39 | |
| 7.5mmx54 French MAS | | 308 Norma Magnum | | 6.5mm x 50 Japanese Arisaka | | 09233 | Number 33: |
| 7.5mmx55 Schmidt-Rubin | | 8mm Remington Magnum | | 09216 | Number 16: | 50 Action Express | |
| 32 Winchester Special | | 338 Winchester Magnum | | 30 Luger (7.65mm Luger) | | 09234 | Number 34: |
| 32-40 Winchester | | 340 Weatherby Magnum | | 30 Mauser (7.65mm Mauser) | | 6.5mm x 68S | |
| 356 Winchester | | 350 Remington Magnum | | 356 TSW | | 8mm x 68S Magnum | |
| 375 Winchester | | 9.3mm x 74 Rimmed | | 9mm Luger | | 09235 | Number 35: |
| 38-55 Winchester & Ballard | | 375 Holland & Holland Magnum | | 9mm Makarov | | 38-40 Winchester | |
| 09203 | Number 3: | 416 Remington Magnum | | 9mm x 21 | | 44-40 Winchester | |
| 22-250 (22 Varminter) | | 450 Marlin | | 9mm FAR | | 09236 | Number 36: |
| 240 Weatherby Magnum | | 458 Winchester Magnum | | 09217 | Number 17: | 45 Winchester Magnum | |
| 243 Winchester | | 09205 | Number 5: | 30 M1 Carbine | | 09237 | Number 37: |
| 6mm Remington (244 Remington) | | 348 Winchester | | 32 Auto (7.65mm Automatic) | | 416 Rigby | |
| 25-06 | | 09206 | Number 6: | 09218 | Number 18: | 09238 | Number 38: |
| 250 Savage (250-3000 Savage) | | 22 Remington Jet | | 44 Magnum | | 7mm Remington Short Action | |
| 257 Roberts | | 5.6mm x 50 Rimmed | | 44 Special | | Ultra Mag | |
| 257 Roberts Improved (40 ⁹) ¹ | | 30-357 AET | | 09219 | Number 19: | 7mm Remington Ultra Magnum | |
| 260 Remington | | 357 Magnum | | 30 Remington | | 300 Remington Short Action | |
| 6.5mm-06 | | 357 Remington Maximum | | 09220 | Number 20: | Ultra Mag | |
| 6.5mm x 57 | | 38 Special | | 45 Colt | | 338 Remington Ultra Magnum | |
| 270 Winchester | | 09207 | Number 7: | 454 Casull | | 375 Remington Ultra Magnum | |
| 280 Remington (7mm Exp. Rem.) | | 30-40 Krag | | 09221 | Number 21: | 09239 | Number 39: |
| 284 Winchester | | 303 British | | 303 Savage | | 38 Colt Super Automatic | |
| 7mm Bench Rest Remington | | 09208 | Number 8: | 09222 | Number 22: | 09240 | Number 40: |
| 7mm-08 Remington | | 45 Auto Rim | | 11mm Mauser | | 475 Linebaugh 1.400" | |
| 7mmx57 Mauser (7mm Mauser) | | 09209 | Number 9: | 43 Spanish | | 480 Ruger | |
| 7mmx64 Brenneke | | 6.5mmx54 Mannlicher-Schoenauer | | 09223 | Number 23: | 09241 | Number 41: |
| 30-06 Springfield | | 35 Remington | | 32 Harrington & Richardson Mag | | 404 Jeffery | |
| 300 Savage | | 09210 | Number 10: | 32 Smith & Wesson Long | | 09242 | Number 42: |
| 308 Winchester | | 17 Remington | | 09224 | Number 24: | 376 Steyr | |
| 7.65mm x 53 Mauser (Belgian) | | 221 Remington Fire Ball | | 405 Winchester | | 09243 | Number 43: |
| 7.7mm x 58 Japanese Arisaka | | 222 Remington | | 09225 | Number 25: | 270 Winchester Short Magnum | |
| 8mm-06 | | 222 Remington Magnum | | 8mm Nambu | | 7mm Winchester Short Magnum | |
| 8mm x 57 Mauser (8mm Mauser) | | 223 Remington (5.6mm) | | 09226 | Number 26: | 300 Winchester Short Magnum | |
| 338-06 | | 7mm Thompson/Center Ugalde | | 7mm x 65 Rimmed | | | |
| 35 Whelen | | 380 Auto Pistol | | 09227 | Number 27: | | |
| 358 Winchester | | 09211 | Number 11: | 357 SIG | | | |
| 9.3mm x 62 Mauser | | 220 Swift | | 40 S & W | | | |
| 400 CorBon | | 09212 | Number 12: | 10mm Auto | | | |
| 45 Automatic (.45 ACP) | | 22 Hornet | | | | | |
| | | 22 K-Hornet | | | | | |

Note: RCBS Shell Holder numbers do not correspond to those of other manufacturers. Important: The boxed numbers shown in the table indicate the following: ¹ Shoulder angle of improved version. ³ Some Browning, DWM Lapua, Norma, RWS and Sako cases require an RCBS #26 Shell Holder.

RCBS

PRECISIONEERED® RELOADING EQUIPMENT

Customer Service

1-800-533-5000 (US or Canada) or 530-533-5191

Hours: Monday - Thursday, 6:30am - 3:00pm (hours may vary)

e-mail: rcbstech@atk.com • www.rcbs.com

RCBS • 605 Oro Dam Blvd. • Oroville, CA 95965

CCI • SPEER • RCBS

OUTERS • RAMLINE • ORBEX • FEDERAL

7200533/0104